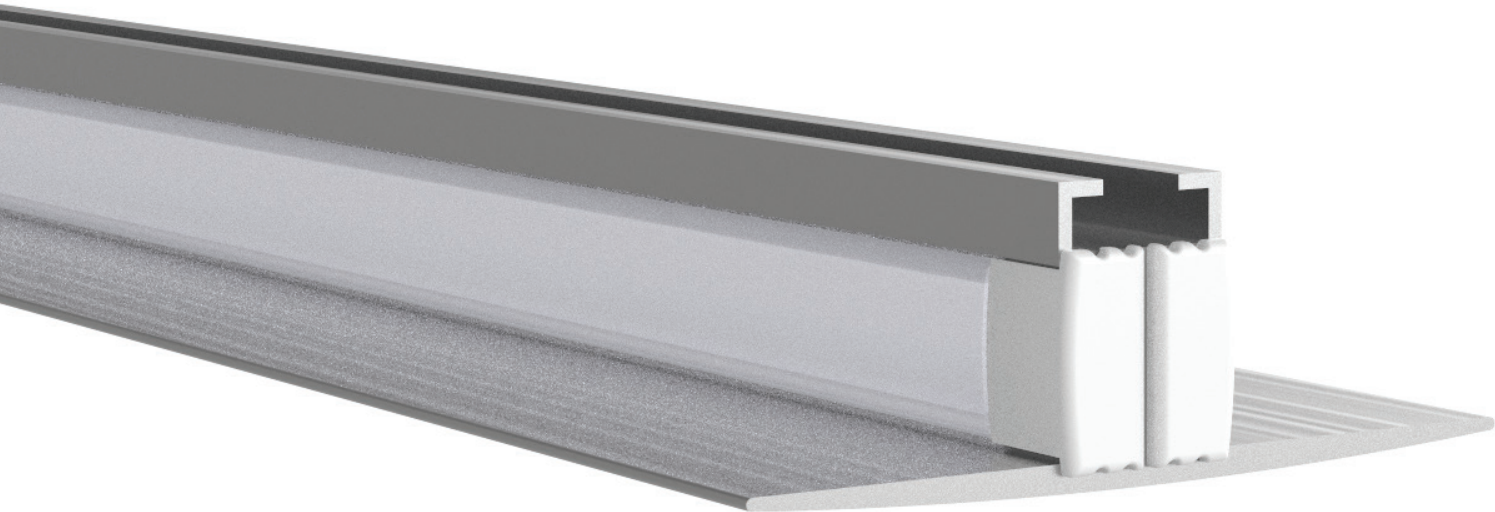
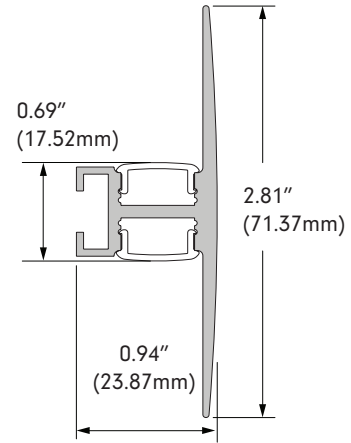
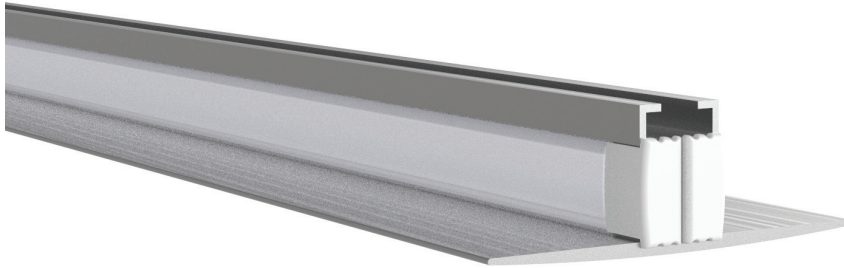


# DEWAR

Design Guide



Profile & Dimensions



Available TivoTape Options - Indoor

**DEFINE**  
LB  
SB  
HO

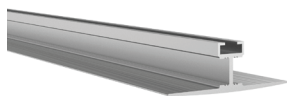
**ELITE**  
SB  
HO  
VHO

**ELITE+**  
Standard  
Pro  
Vision  
Flow

**FUSE24**  
RGB  
RGBW

**FUSE12**  
PiXEL RGB

Ordering Information



**DWAR-CHAN-SLV-6.5**  
Anodized Aluminum Extrusion,  
available in 6.5' lengths



**DWAR-LNS-XXX-6.5**  
**XXX = OPL** (Opal), **CLR**  
(Clear), **DIF** (Diffuser)  
Lens, 6.5' Lengths



**DWAR-EC-01**  
Solid End Cap

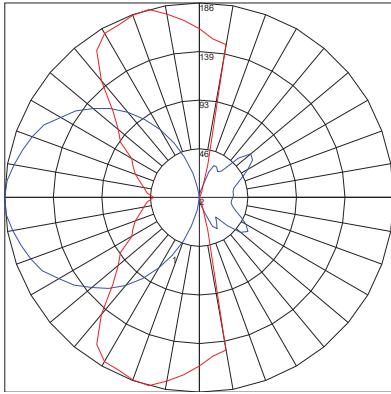


**DWAR-EC-02**  
Powerfeed End Cap

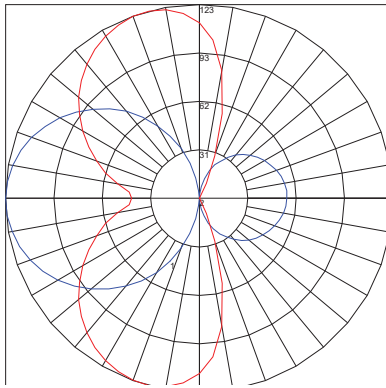


**DWAR-CLP-SLV**  
Clip, Metal

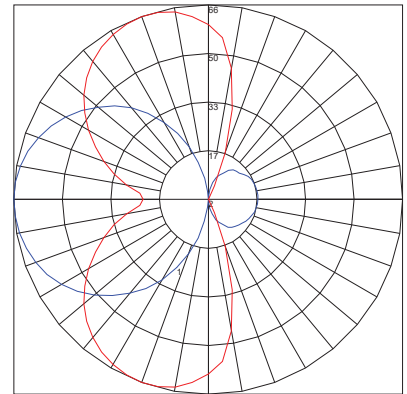
Photometrics (based on 30K HO Elite)



**DEWAR WITH CLEAR LENS**  
 Lumens per foot: 674.70  
 Watts per foot: 7.71  
 CRI : 94.7  
 Peak Candela: 185.84



**DEWAR WITH DIFFUSED LENS**  
 Lumens per foot: 537.38  
 Watts per foot: 7.73  
 CRI : 95.3  
 Peak Candela: 123.39



**DEWAR WITH OPAL LENS**  
 Lumens per foot: 297.85  
 Watts per foot: 7.76  
 CRI : 97.9  
 Peak Candela: 66.47

Diode Visibility



Opal lens



Clear lens



Diffused lens

